

# **L2/L4 Managed Gigabit Ethernet Switch**

## **GS-4210 Ultra PoE Series**

### Quick Installation Guide

# Table of Contents

1. Introduction .....	3
2. Package Contents .....	4
3. Requirements .....	5
4. Terminal Setup .....	6
5. Logon to the Console .....	7
6. Configuring IP Address via the Console .....	8
7. Saving the Configuration via the Console.....	10
8. Starting Web Management .....	11
9. Saving Configuration via the Web .....	14
10. Recovering Back to Default Configuration .....	15
11. Customer Support .....	16

---

## 1. Introduction

Thank you for purchasing PLANET L2/L4 Managed Gigabit Ethernet Switch. The description of this model is shown below:

<b>GS-4210-16UP4C</b>	16-port 10/100/1000T Ultra PoE + 4-port Gigabit TP/SFP Combo Managed Switch
<b>GS-4210-24UP4C</b>	24-port 10/100/1000T Ultra PoE + 4-port Gigabit TP/SFP Combo Managed Switch

**“Managed Switch”** is used as an alternative name in this Quick Installation Guide.

Open the box of the Managed Switch and carefully unpack it. The box should contain the following items:

## 2. Package Contents

Model Series		GS-4210	
Package Item	Model Name	16UP4C	24UP4C
The Managed Switch		■	■
Quick Installation Guide		■	■
RS-232 to RJ45 Console Cable		■	■
Rubber Feet		■	■
Two Rack-mounting Brackets with Attachment Screws		■	■
Power Cord		■	■
SFP Dust Caps		4	4

If any item is found missing or damaged, please contact your local reseller for replacement.

---

### 3. Requirements

- Workstations running Windows XP/2003/Vista/7/8/2008/10, MAC OS X or later, Linux, UNIX, or other platforms are compatible with TCP/IP protocols.
- Workstations are installed with Ethernet NIC (Network Interface Card)
- **Serial Port** Connection (Terminal)
  - The above Workstations come with COM Port (DB9) or USB-to-RS-232 converter.
  - The above Workstations have been installed with terminal emulator, such as Hyper Terminal included in Windows XP/2003.
  - **Serial cable** -- One end is attached to the RS-232 serial port, while the other end to the console port of the Managed Switch.
- Ethernet Port Connection
  - **Network cables** -- Use standard network (UTP) cables with RJ45 connectors.
  - The above PC is installed with **Web browser** and JAVA runtime environment plug-in.

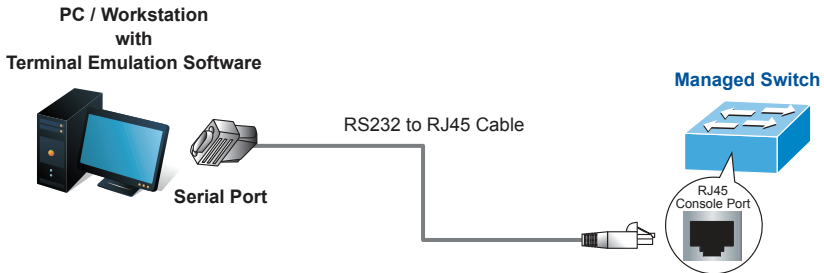


#### Note

It is recommended to use Internet Explore 8.0 or above to access the Managed Switch. If the Web interface of the Managed Switch is not accessible, please turn off the anti-virus software or firewall and then try it again.

## 4. Terminal Setup

The Managed Switch is equipped with a console interface for local switch setup and maintenance. To configure the system, connect a serial cable to a **COM port** on a PC or notebook computer and to the RJ45 type of the console port of the Managed Switch.

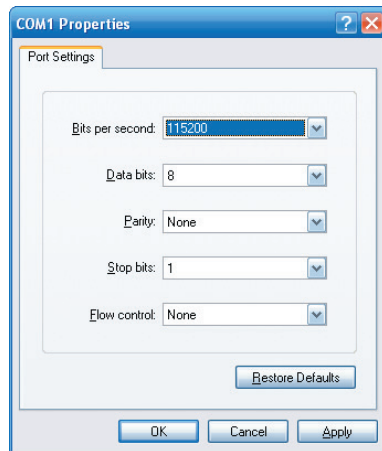


**Figure 4-1:** Managed Switch Console Connectivity

A terminal program is required to make the software connection to the Managed Switch.

1. Run terminal program on the OS.
2. When the following screen appears, make sure that the COM port should be configured as:

- Baud: 115200
- Data bits: 8
- Parity: None
- Stop bits: 1
- Flow control: None



**Figure 4-2** COM Port Configuration

## 5. Logon to the Console

Once the terminal is connected to the device, power on the Managed Switch and the terminal will display “running testing procedures”. Then, the following message asks to log-in user name and password. The factory default user name and password are shown as follows, and the login screen in Figure 5-1 appears.

```
Username: admin  
Password: admin
```

```
Press any key to continue  
Username: admin  
Password: *****  
GS-4210#
```

**Figure 5-1:** Managed Switch Console Login Screen

The user can now enter commands to manage the Managed Switch. For a detailed description of the commands, please refer to the following chapters.



### Note

1. For security reason, please change and memorize the new password after this first setup.
2. Only accept command in lowercase letter under console interface.

## 6. Configuring IP Address via the Console

The Managed Switch is shipped with default IP address as follows:

```
IP Address: 192.168.0.100  
Subnet Mask: 255.255.255.0
```

To check the current IP address or modify a new IP address for the Switch, please use the procedures as follows:

### ■ Show the current IP address

1. At the "GS-4210 Series#" prompt, enter "show ip".
2. The screen displays the current IP Address, Subnet Mask and Gateway as shown in Figure 6-1.

```
Press any key to continue  
Username: admin  
Password: *****  
GS-4210# show ip  
IP Address: 192.168.0.100  
Subnet Netmask: 255.255.255.0  
Default Gateway: 192.168.0.254
```

Figure 6-1: IP Information Screen

### ■ Configuring IP address

3. At the "GS-4210 Series#" prompt, enter "configure".
4. At the "GS-4210 Series(config)#" prompt, enter the following command and press <Enter> as shown in Figure 6-2.

```
GS-4210 Series(config)# ip address 192.168.1.100 mask 255.255.255.0  
GS-4210 Series(config)# ip default-gateway 192.168.1.254
```



The previous command would apply the following settings for the Switch.

**IP Address: 192.168.1.100**  
**Subnet Mask: 255.255.255.0**  
**Gateway: 192.168.1.254**

```
Press any key to continue
Username: admin
Password: ****
GS-4210# configure
GS-4210(config)# ip address 192.168.1.100 mask 255.255.255.0
GS-4210(config)# ip default-gateway 192.168.1.254
```

**Figure 6-2:** IP Address Screen

5. Repeat Step 1 to check if the IP address has changed.

If the IP is successfully configured, the Managed Switch will apply the new IP address setting immediately. You can access the Web interface of the GS-4210 Managed Switch Series through the new IP address.



If you are not familiar with console command or the related parameter, enter "?" anytime in console to get the help description.

## 7. Saving the Configuration via the Console

In the switch, the running configuration file is stored in the RAM. In the current version, the running configuration sequence of running-config can be saved from the RAM to FLASH by **writing** the command or **copying** the **running-config startup-config** command, so that the running configuration sequence becomes the startup configuration file, which is the configuration saved.

1. At the "GS-4210 Series#" prompt, enter "**copy running-config startup-config**" as shown in Figure 7-1.

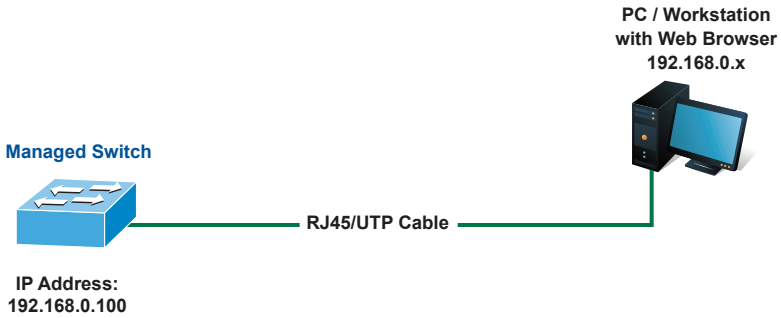
```
Press any key to continue
Username: admin
Password: *****
GS-4210# copy running-config startup-config
Success
```

Figure 7-1: The Configuration Screen

## 8. Starting Web Management

The following shows how to start up the **Web Management** of the Managed Switch. Note the Managed Switch is configured through an Ethernet connection. Please make sure the manager PC must be set to the same **IP subnet address**.

For example, the default IP address of the Managed Switch is **192.168.0.100**, then the manager PC should be set to **192.168.0.x** (where x is a number between 1 and 254, except 100), and the default subnet mask is 255.255.255.0.



**Figure 8-1:** IP Management Diagram

## Logging in to the Managed Switch

1. Use Internet Explorer 8.0 or above Web browser and enter IP address **http://192.168.0.100** to access the Web interface.
2. When the following dialog box appears, please enter the default user name and password "**admin**". The login screen in Figure 8-2 appears.

Default Username: **admin**

Default Password: **admin**

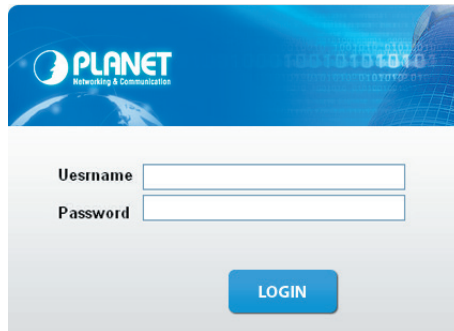


Figure 8-2: Login Screen

3. After entering the password, the main screen appears as Figure 8-3 shows.

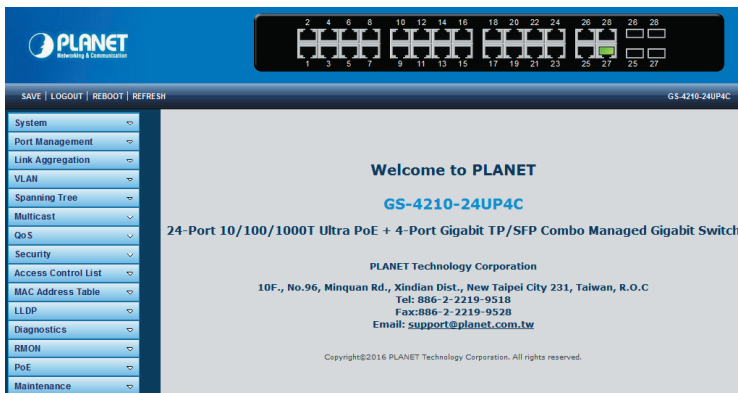
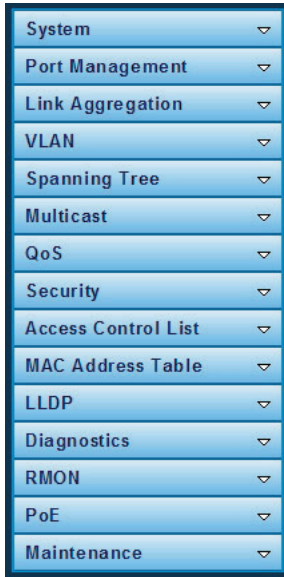


Figure 8-3: Web Main Screen of Managed Switch

---

The Switch Menu on the left of the Web page lets you access all the commands and statistics the Managed Switch provides.



**Figure 8-4:** Switch Menu

Now, you can use the Web management interface to continue the Switch management.

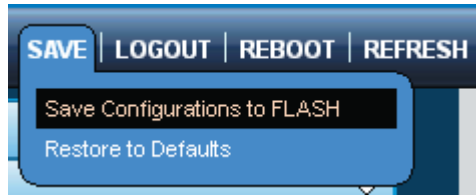
Please refer to the user's manual for more.

## 9. Saving Configuration via the Web

In the Managed Switch, the running configuration file is stored in the RAM. In the current version, the running configuration sequence of running-config can be saved from the RAM to FLASH by “**Save Configurations to FLASH**” function, so that the running configuration sequence becomes the startup configuration file, which is the configuration saved.

To save all applied changes and set the current configuration as a startup configuration, the startup-configuration file will be loaded automatically across a system reboot.

1. Click “**Save > Save Configurations to FLASH**” to login to the “Configuration Manager” page.



2. Press the “**Apply**” button to save running configuration to start up configuration.

### Configuration Manager

#### Save Configuration

Source File	<input checked="" type="radio"/> Running configuration <input type="radio"/> Startup configuration <input type="radio"/> Backup configuration
Destination File	<input checked="" type="radio"/> Startup configuration <input type="radio"/> Backup configuration

## 10. Recovering Back to Default Configuration

### ■ IP address has been changed or admin password has been forgotten –

To reset the IP address to the default IP address “**192.168.0.100**” or reset the login password to the default value, press the hardware **reset button** on the front panel for about **10 seconds**. After the device is rebooted, you can login the management Web interface within the same subnet of 192.168.0.xx.

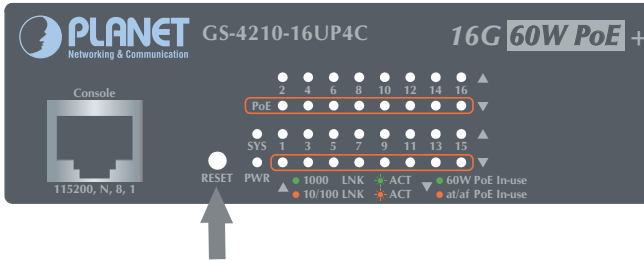


Figure 10-1: GS-4210-16UP4C Reset Button

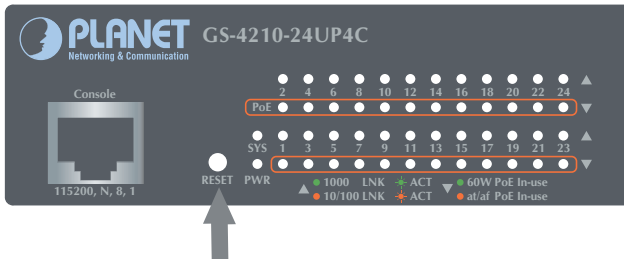


Figure 10-2: GS-4210-24UP4C Reset Button

## 11. Customer Support

Thank you for purchasing PLANET products. You can browse our online FAQ resource and User's Manual on PLANET Web site first to check if it could solve your issue. If you need more support information, please contact PLANET switch support team.

PLANET online FAQ:

<http://www.planet.com.tw/en/support/faq.php?type=1>

Switch support team mail address:

[support\\_switch@planet.com.tw](mailto:support_switch@planet.com.tw)

GS-4210 Ultra PoE Series User's Manual:

<http://www.planet.com.tw/en/support/download.php?type1=1&model=&type=3>



(Please select your switch model name from Product Model drop-down menu)

Copyright © PLANET Technology Corp. 2016.

Contents are subject to revision without prior notice.

PLANET is a registered trademark of PLANET Technology Corp. All other trademarks belong to their respective owners.